



# Rockmills Steel Products <sup>©</sup>

Excellence Since 1954

(516) 829-8555

Info@rockmillsboilers.com

(718) 366-8300

## Specifications



**Series**  
**Horse Power:**  
**Efficiency**

**MP-300SS**  
**300 H.P.**  
**Up to 85%**

### Gross Output

<b>Steam</b>	41850.0	<b>SQ.FT</b>
<b>Steam</b>	10042.5	<b>MBH</b>
<b>Steam</b> (per hr from & at 212 Deg F)	10350.0	<b>LBS</b>

### Net Rating

<b>SQ.Ft of Steam</b>	33480.0	<b>SQ.FT</b>
<b>MBH of Steam</b>	8034.0	<b>MBH</b>

### Firing Rate

<b>Light Oil</b> (140000 BTU/Gal)	87.5	<b>GPH</b>
<b>Heavy Oil</b> (150000 BTU GAL)	81.5	<b>GPH</b>
<b>GAS</b>	12247.0	<b>MBH</b>

### General Information

<b>Heating Surface</b>	1500	<b>SQ.FT</b>
<b>Furnace Volume</b>	188.057	<b>CU. FT</b>
<b>Safety Valve Relieving Capacity -</b> Required Steam (Min)	12000	<b>LB/HR</b>
<b>Steam Outlet Pipe Size</b>	10	<b>IN</b>
<b>Dry Boiler Weight (Approximate)</b>	26,287	<b>LB</b>
<b>Operating Weight (Approximate)</b>	43,110	<b>LB</b>



# Rockmills Steel Products ©

Excellence Since 1954

(516) 829-8555

Info@rockmillsboilers.com

(718) 366-8300

## Dimensions

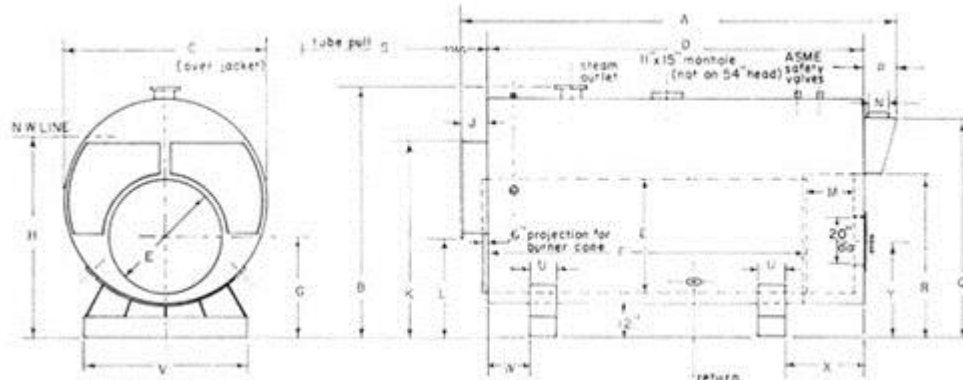


### Series MP-4

Horse Power:  
Efficiency

### MP-300SS

300 H.P.  
Up to 85%



\*\* As per ASME code all boilers with a diameter greater than 60" will be equipped with 12"x16" manhole

## Dimensions

<b>A</b>	Overall Length	13-5 1/2	FT-IN.
<b>B</b>	Overall Height	122	IN.
<b>C</b>	Shell Diameter (Over jacket 2" thick)	106.875	IN.
<b>D</b>	Shell Length	10-1 1/4	FT-IN.
<b>E</b>	Furnace Diameter	50	IN.
<b>F</b>	Furnace Length	91.25	IN.
<b>G</b>	Height-Centerline of Furnace	41.4375	IN.
<b>H</b>	Normal Water Line	96.6875	IN.
<b>J</b>	Depth-Front Reversing Chamber	13.125	IN.
<b>K</b>	Height-Front Rev. Chamber Top	94.375	IN.
<b>L</b>	Height-Front Rev. Chamber Bottom	46	IN.
<b>M</b>	Depth-Rear Combustion Chamber	24	IN.
<b>N</b>	Vent Outlet Diameter	26	IN.
<b>P</b>	Depth-Smoke Box	27.125	IN.
<b>Q</b>	Height-Smoke hood Top	113.6875	IN.
<b>R</b>	Height-Smoke hood Bottom	79.1875	IN.
<b>S</b>	Tube Pull	10-1 1/4	FT-IN.
<b>U</b>	Saddle Width	12	IN.
<b>V</b>	Saddle Length	90	IN.
<b>W</b>	Position-Front Saddle	12	IN.
<b>X</b>	Position-Rear Saddle	24	IN.
<b>Y</b>	Centerline of Access Door	29.75	IN.
<b>Z</b>	Manhole	12 x 16	IN.
	Handhole	3 x 4	IN.