



# Rockmills Steel Products <sup>©</sup>

Excellence Since 1954

(516) 829-8555

Info@rockmillsboilers.com

(718) 366-8300

## Specifications



**Series**  
**Horse Power:**  
**Efficiency**

**MP-100SL**  
**100 H.P.**  
**Up to 85%**

### Gross Output

<b>Steam</b>	13950.0	<b>SQ.FT</b>
<b>Steam</b>	3347.5	<b>MBH</b>
<b>Steam</b> (per hr from & at 212 Deg F)	3450	<b>LBS</b>

### Net Rating

<b>SQ.Ft of Steam</b>	11160.0	<b>SQ.FT</b>
<b>MBH of Steam</b>	2678.0	<b>MBH</b>

### Firing Rate

<b>Light Oil</b> (140000 BTU/Gal)	29.2	<b>GPH</b>
<b>Heavy Oil</b> (150000 BTU GAL)	27.2	<b>GPH</b>
<b>GAS</b>	4082.3	<b>MBH</b>

### General Information

<b>Heating Surface</b>	500	<b>SQ.FT</b>
<b>Furnace Volume</b>	60.798	<b>CU. FT</b>
<b>Safety Valve Relieving Capacity -</b> Required Steam (Min)	4000	<b>LB/HR</b>
<b>Steam Outlet Pipe Size</b>	8	<b>IN</b>
<b>Dry Boiler Weight (Approximate)</b>	14,132	<b>LB</b>
<b>Operating Weight (Approximate)</b>	22,312	<b>LB</b>



# Rockmills Steel Products ©

Excellence Since 1954

(516) 829-8555

Info@rockmillsboilers.com

(718) 366-8300

## Dimensions

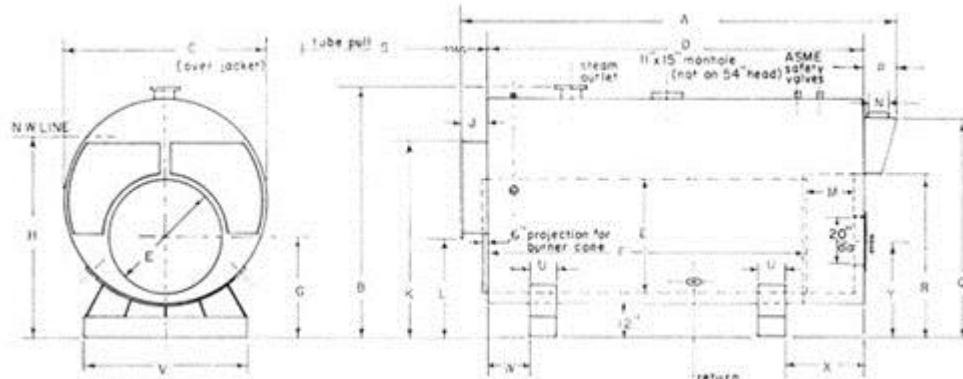


### Series MP-4

**Horse Power:**  
**Efficiency**

### MP-100SL

**100 H.P.**  
**Up to 85%**



\*\* As per ASME code all boilers with a diameter greater than 60" will be equipped with 12"x16" manhole

### Dimensions

Dimension	Description	Value	Unit
<b>A</b>	Overall Length	17-1 1/4	FT-IN.
<b>B</b>	Overall Height	73.5	IN.
<b>C</b>	Shell Diameter (Over jacket 2" thick)	58	IN.
<b>D</b>	Shell Length	14-10	FT-IN.
<b>E</b>	Furnace Diameter	27	IN.
<b>F</b>	Furnace Length	153	IN.
<b>G</b>	Height-Centerline of Furnace	29.0625	IN.
<b>H</b>	Normal Water Line	57.5625	IN.
<b>J</b>	Depth-Front Reversing Chamber	8.75	IN.
<b>K</b>	Height-Front Rev. Chamber Top	55.1875	IN.
<b>L</b>	Height-Front Rev. Chamber Bottom	32.6875	IN.
<b>M</b>	Depth-Rear Combustion Chamber	18	IN.
<b>N</b>	Vent Outlet Diameter	16	IN.
<b>P</b>	Depth-Smoke Box	17.75	IN.
<b>Q</b>	Height-Smoke hood Top	64.4375	IN.
<b>R</b>	Height-Smoke hood Bottom	46.5625	IN.
<b>S</b>	Tube Pull	14-10	FT-IN.
<b>U</b>	Saddle Width	8	IN.
<b>V</b>	Saddle Length	42	IN.
<b>W</b>	Position-Front Saddle	8	IN.
<b>X</b>	Position-Rear Saddle	21	IN.
<b>Y</b>	Centerline of Access Door	29.5	IN.
<b>Z</b>	Manhole	12 x 16	IN.
	Handhole	3 x 4	IN.